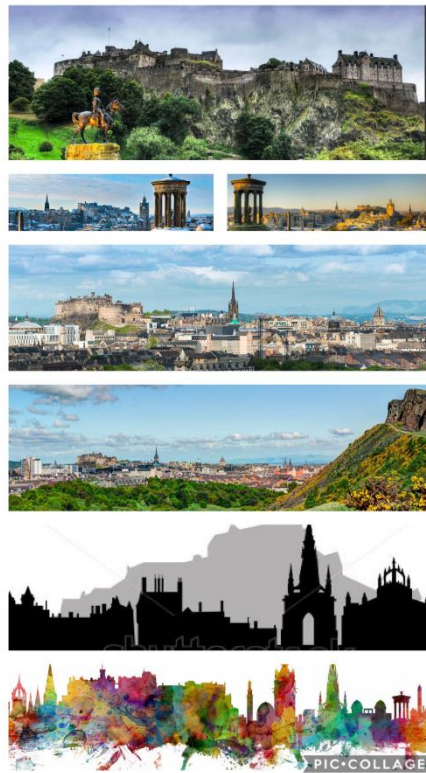


P4 Art 8.6.20

- I can create my own skyline image showing understanding line and shape



These are pictures of Edinburgh skylines. A skyline is the outline or shape created by buildings or land against the sky. The top 5 images are photographs. The 6th image is a silhouette and the final image is more abstract with lots of colour.

Do you recognise any of the places in the pictures? Can you name them?

1. Use these images as an idea for **creating your own Edinburgh skyline picture** or look outside to see if you can see part of the Edinburgh skyline from where you live.
2. Using pencil, draw a light outline showing roof tops, church spires, hills etc.
3. Decide which **media** you will use – pencil, pen, paint, pastels – perhaps a mixture?
4. Colour your picture – will you create a black silhouette or go for colour?
5. Be creative, have fun and feel free to share your learning with us!